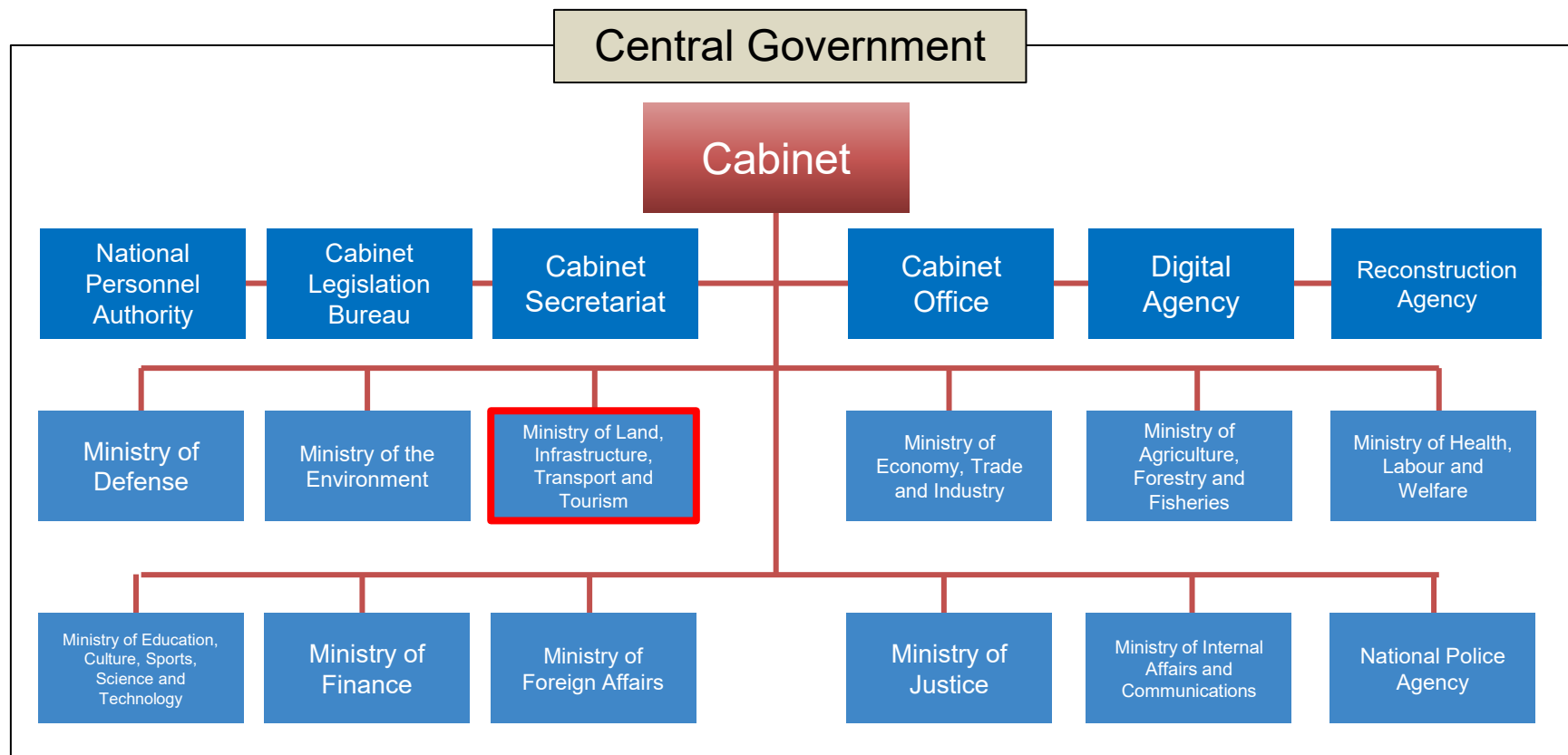


Agenda Item 3

Presentation on Updated Statistics (Japan)

1. Organizational Structure

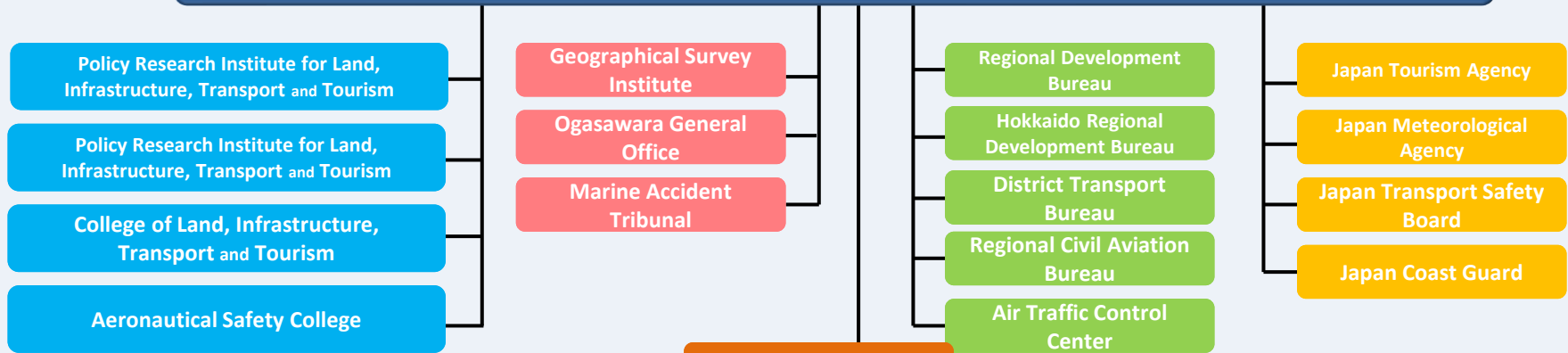


Data submission
↗
↖
Surveys, obligations,
etc.

Private enterprises, local governments,
local branches of the central government,
etc.

(For Reference)
Portal Site of Official Statistics of Japan
<https://www.e-stat.go.jp/en>

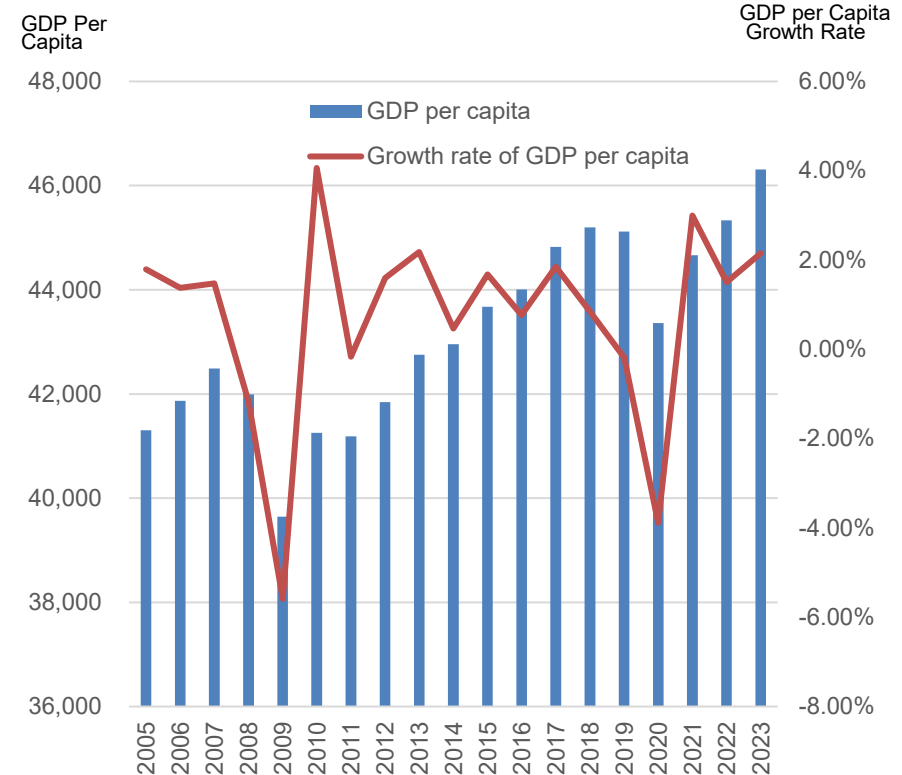
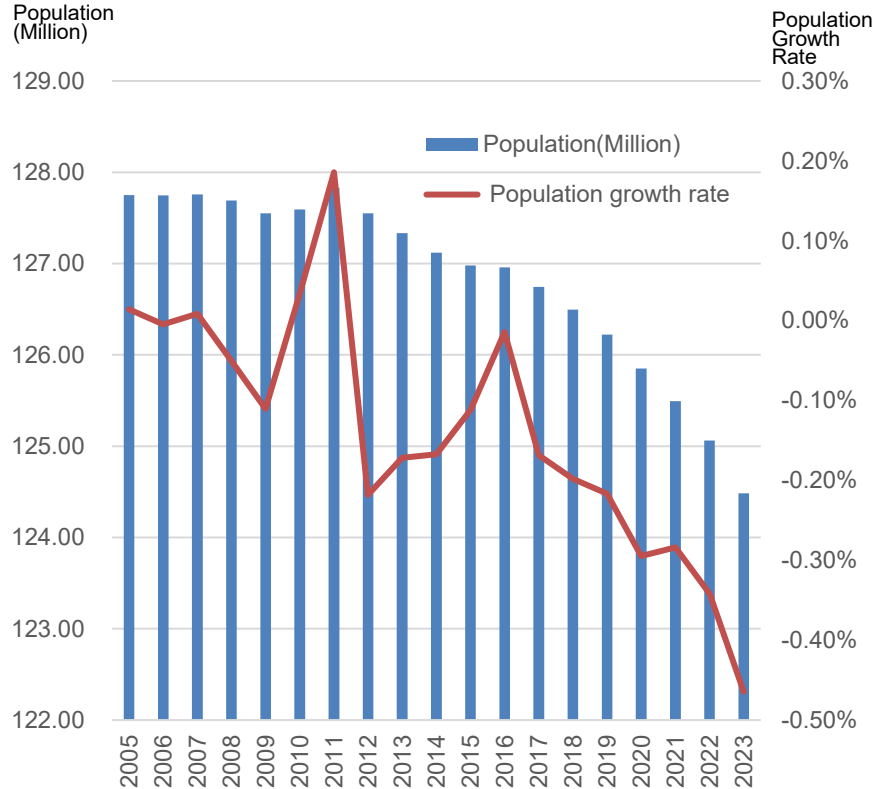
Ministry of Land, Infrastructure, Transport and Tourism



Head Quarter

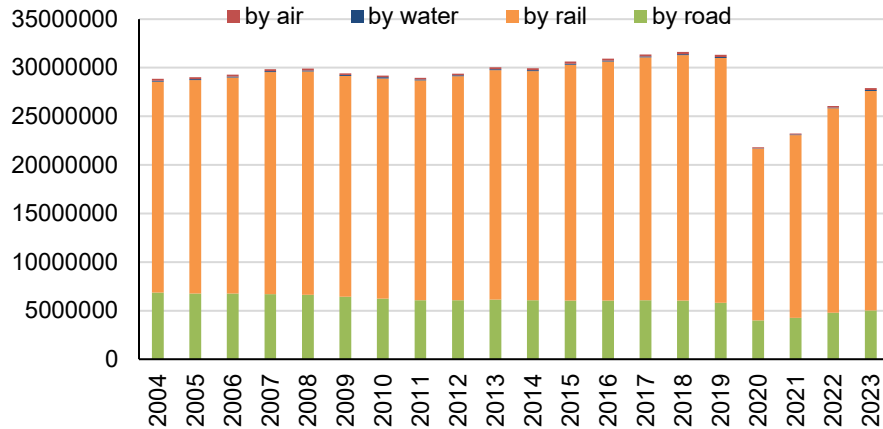


2. Summary of the Updated Statistics

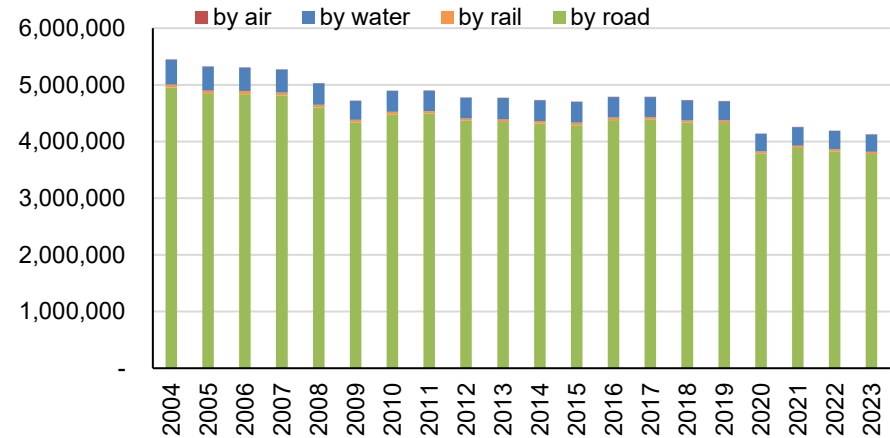


- The total population in Japan has started its decline around the beginning of the century and now has decreased to 124,482 million people in 2023.
- Although GDP per capita shows a growing trend at the moment, given the anticipated labor shortage predicted from the steady decrease in population, policies aimed at securing the workforce and increasing labor productivity within the transport sector is essential for ensuring sustainable economic growth in Japan.

Domestic passenger traffic
(thousand persons)



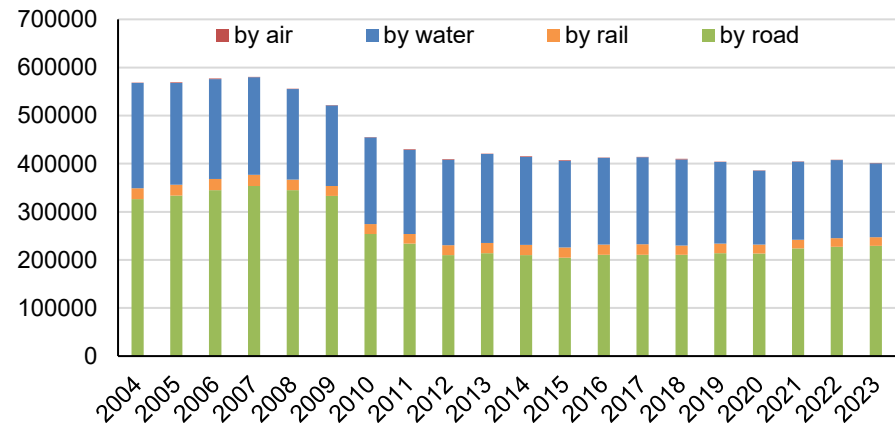
Domestic freight traffic
(thousand Tons)



Statistics for 2023

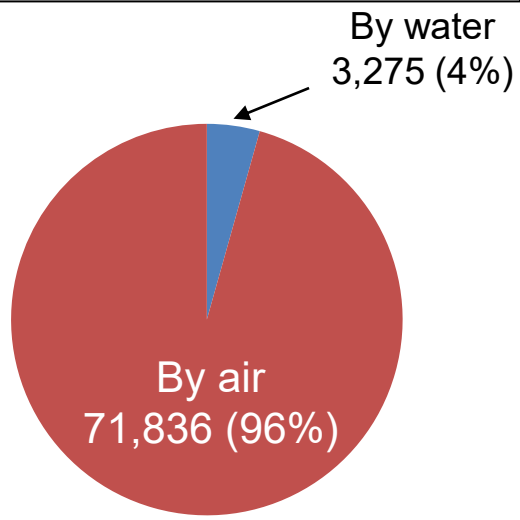
- Domestic passenger traffic:
→ **27,918 million** persons
- Domestic freight traffic:
→ **4,124,336 Thousand** Tons
- Domestic freight movement:
→ **401,601 Million** Ton-km

Domestic freight movement
(Million Ton-km)

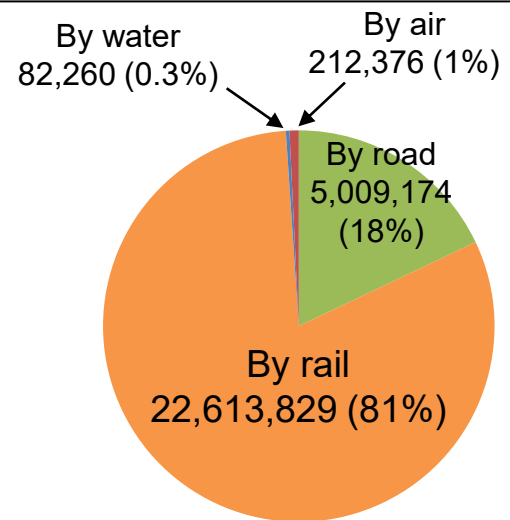


Current modal split in Japan (2023)

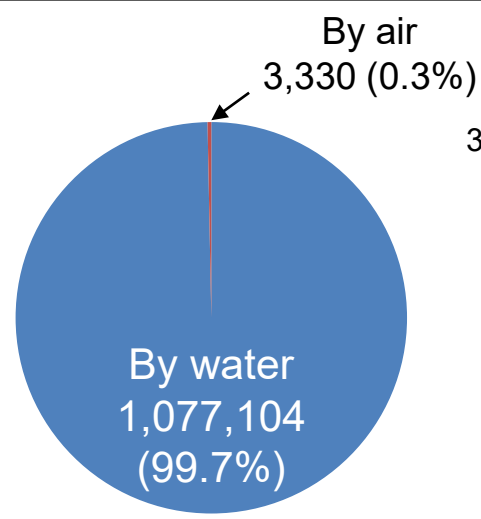
International passenger traffic
(Thousand persons)



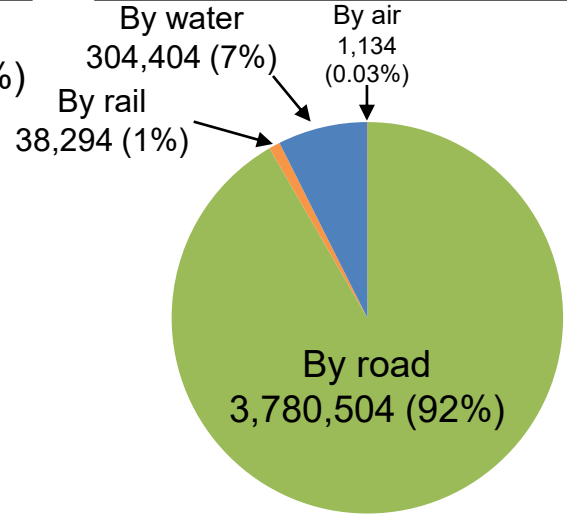
Domestic passenger traffic
(Thousand persons)



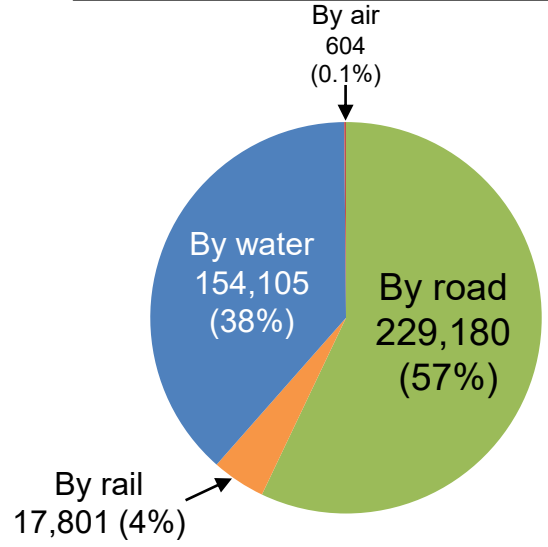
International freight traffic
(Thousand Tons)



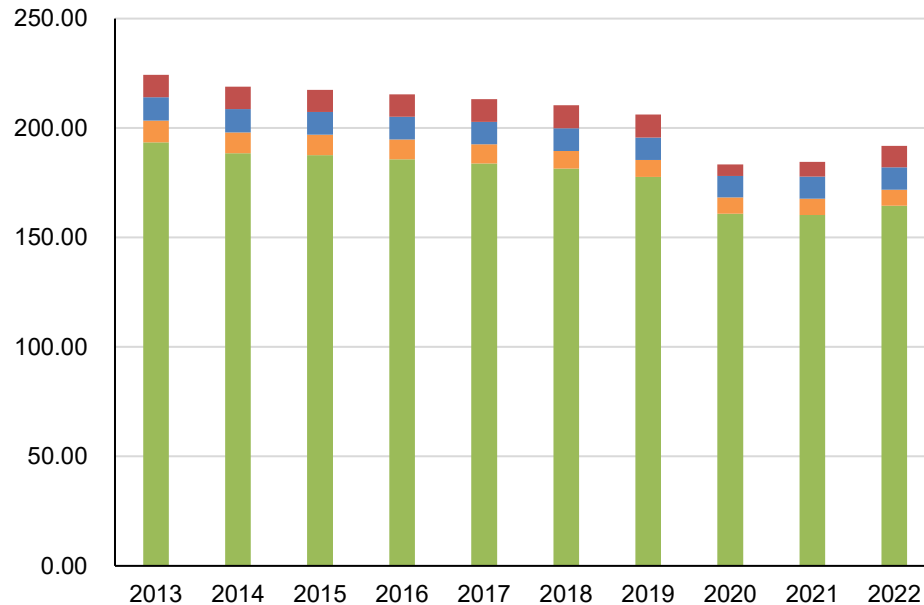
Domestic freight traffic
(Thousand Tons)



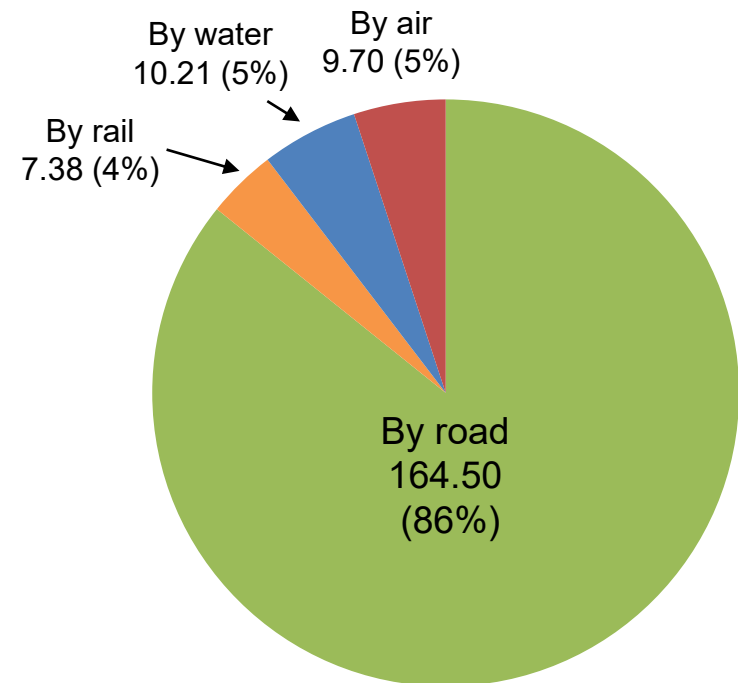
Domestic freight movement
(Million Ton-km)



Total GHG emissions
(Million Ton CO₂)

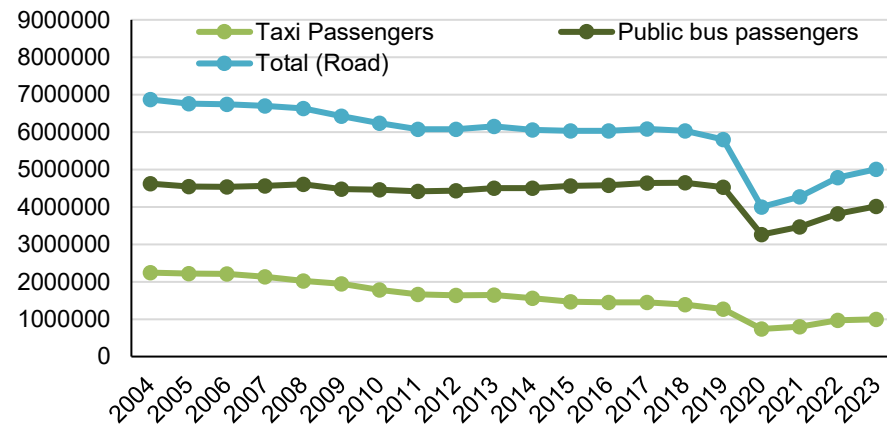


Total GHG emissions (2022)
(Million Ton CO₂)

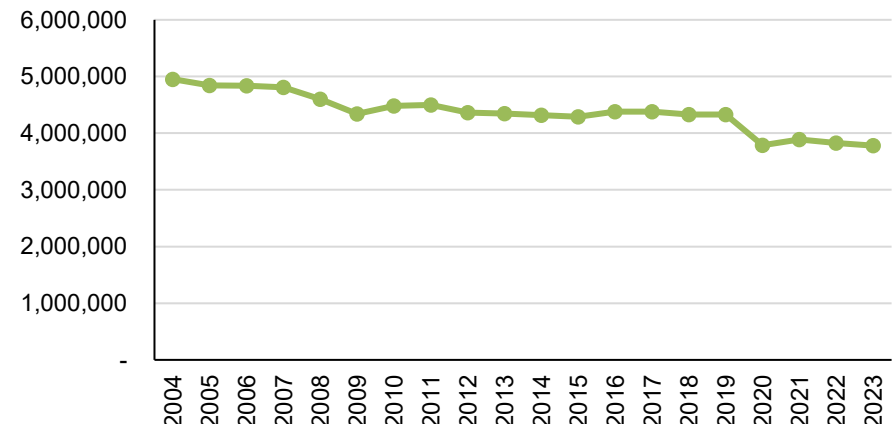


- Overall, GHG emission from the transport sector is in a decreasing trend (emissions in 2022 are approximately 85% that of 2013)
- GHG emission in 2022 has grown compared to 2021, presumably affected most profoundly by the recovery from the COVID-19 pandemic

Domestic road passenger traffic
(thousand persons)



Domestic road freight traffic
(thousand Tons)

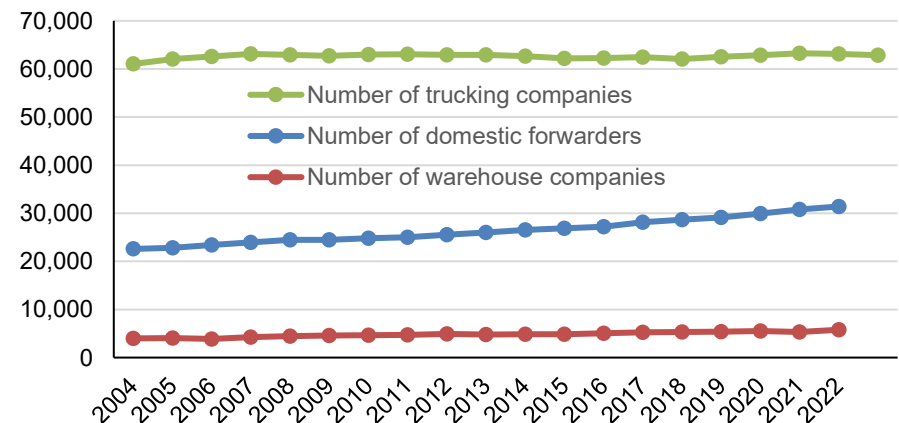


Latest Statistics

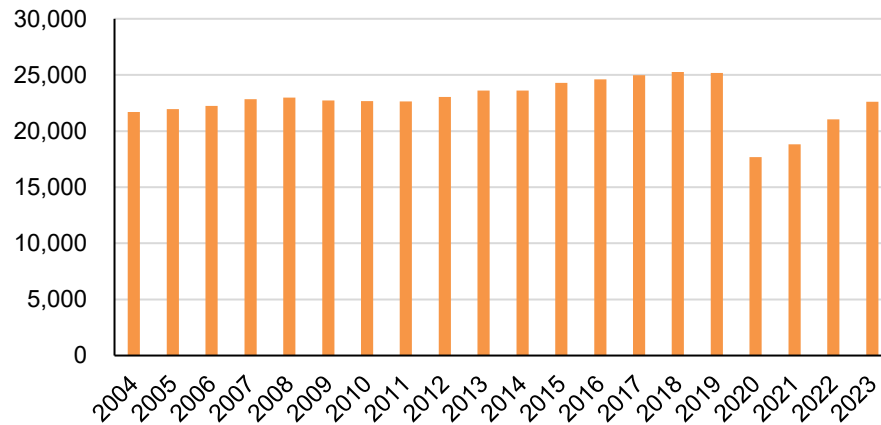
(data for 2023, unless otherwise specified)

- Domestic road passenger traffic:
→ **5,009,174 thousand** persons
(Taxi:993,875k; Public bus: 4,015,298k)
- Domestic road freight traffic:
→ **3,780,504 thousand** Tons
- Domestic freight transport operators:
 - **62,848** trucking companies
 - **31,406** domestic forwarders (2022)
 - **5,788** warehouse companies (2022)

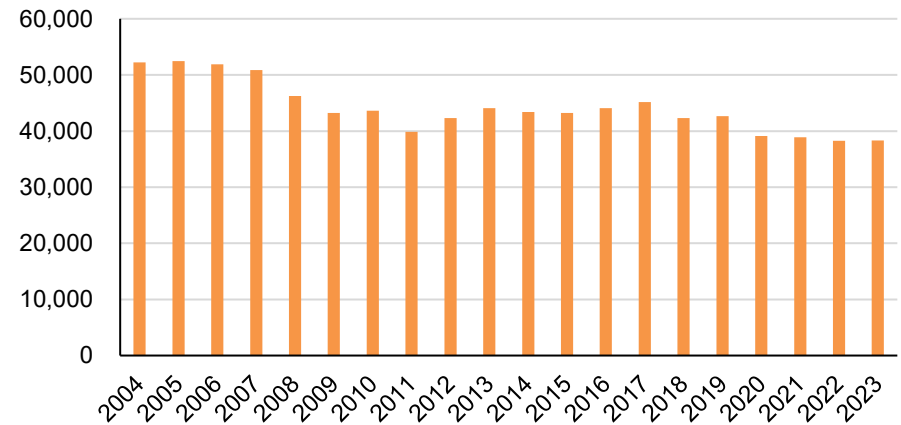
Domestic freight transport operators
(Number of companies)



Domestic rail passenger traffic
(million persons)



Domestic rail freight traffic
(thousand Tons)

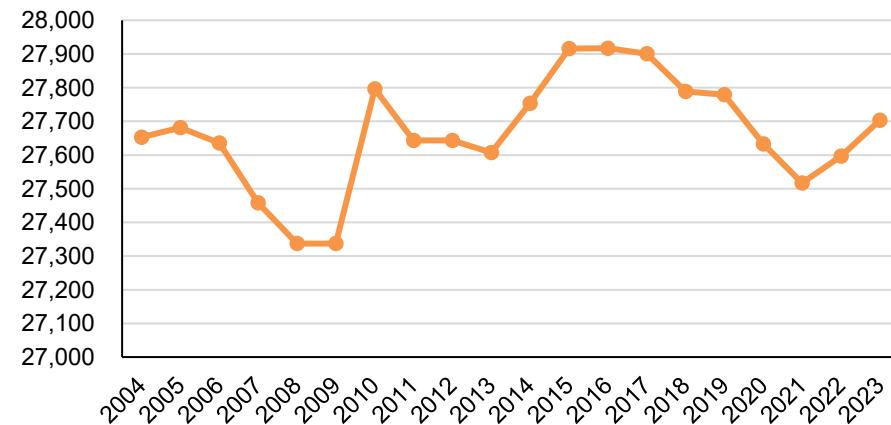


Latest Statistics

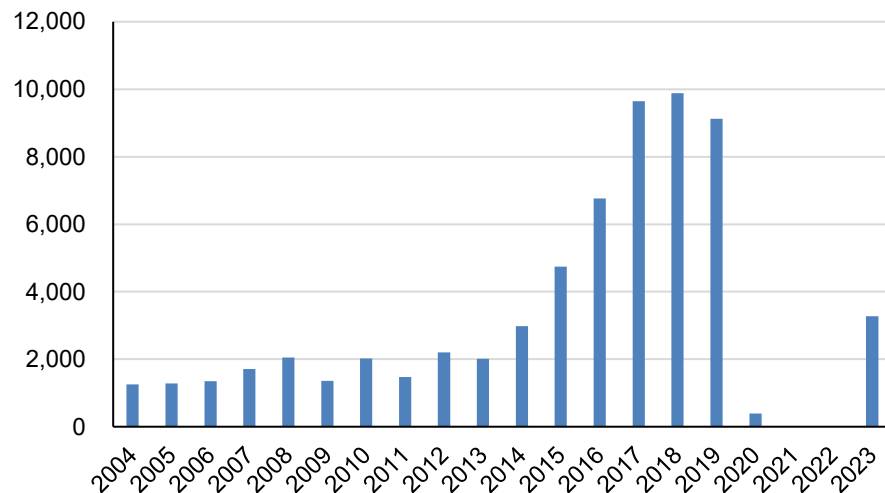
(data for 2023, unless otherwise specified)

- Domestic rail passenger traffic:
→ **22,614 million** persons
- Domestic road freight traffic:
→ **38,294 thousand** Tons
- Total railway length:
→ **27,703 km**

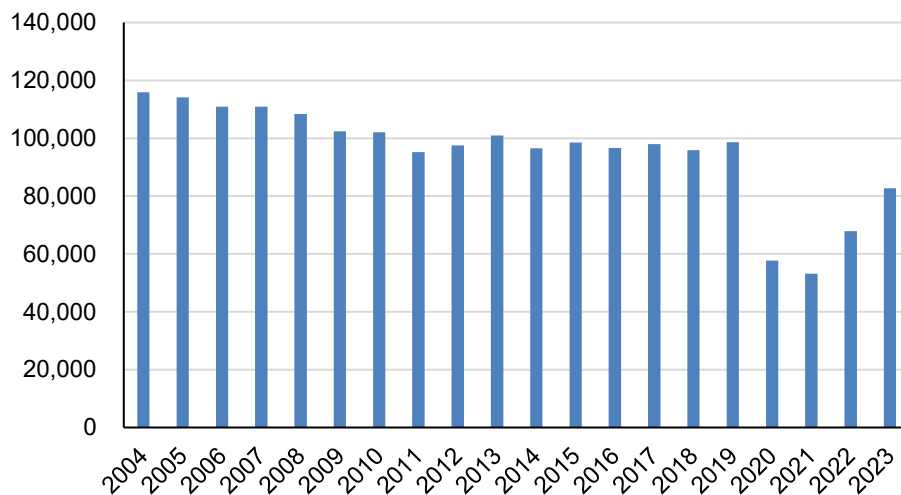
Total railway route length
(km)



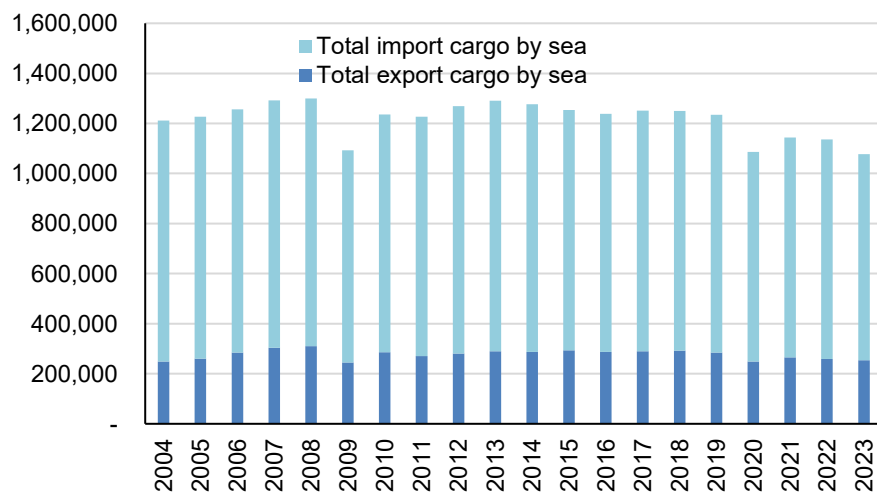
International sea passenger traffic



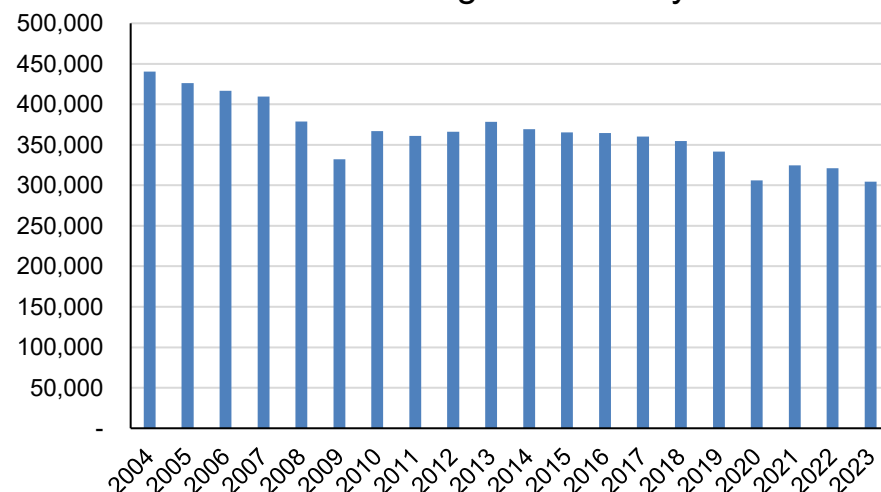
Domestic sea passenger traffic



International sea cargo traffic

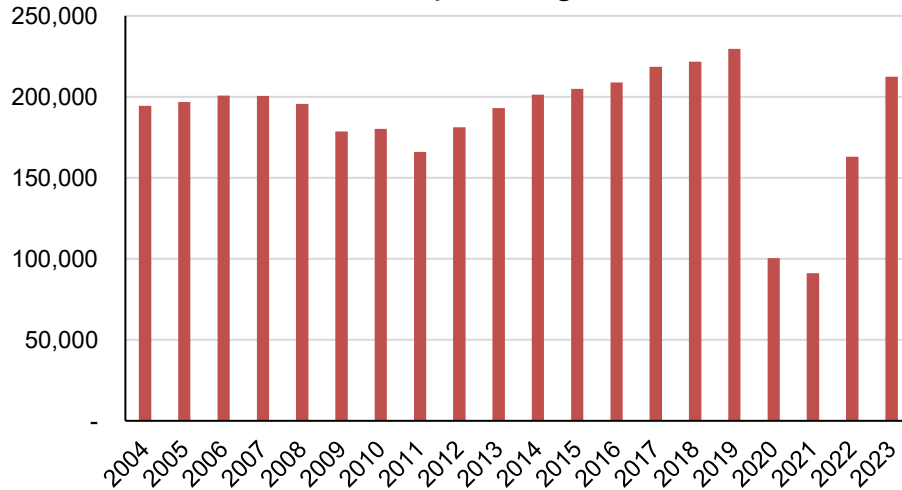


Total domestic freight volume by sea

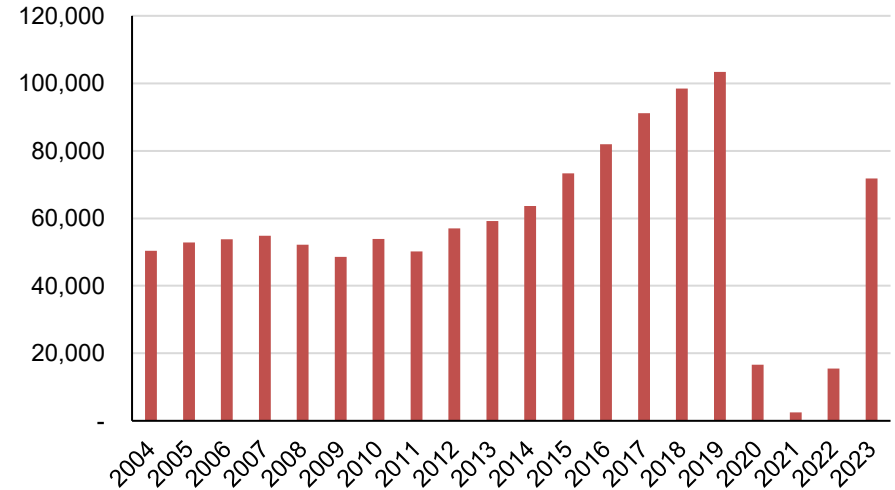


Thousand people (passenger), thousand Tons (cargo)

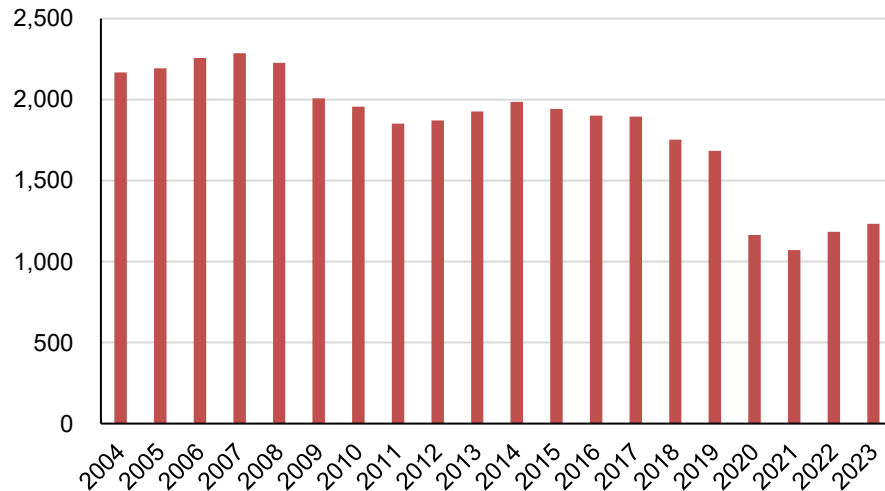
Domestic air passenger traffic



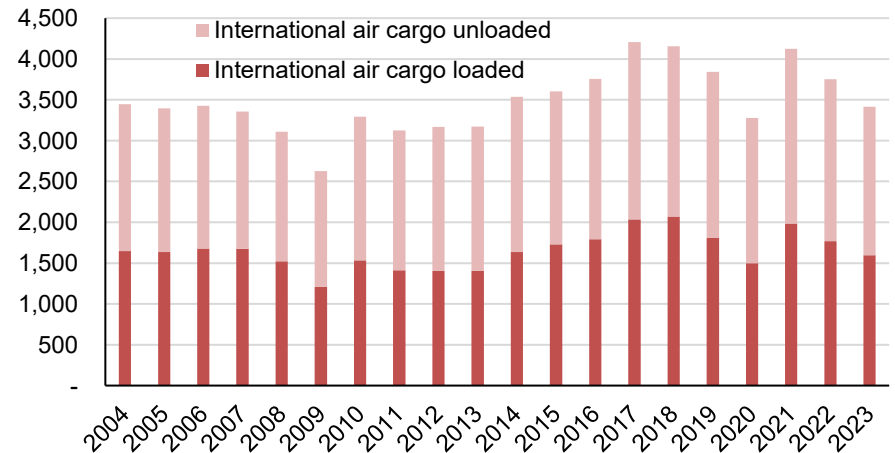
International air passenger traffic



Domestic air cargo traffic



International air cargo traffic



Thousand people (passenger), thousand Tons (cargo)

Updated Information on Focal Points

■ International Policy Division, Ministry of Land, Infrastructure, Transport and Tourism (MLIT)

- Mr. IWAKUMA Daichi (Director for International Negotiations)
 - E-mail: iwakuma-d2qd@mlit.go.jp
- Mr. IKEGUCHI Keita (Deputy Director for International Cooperation)
 - E-mail: ikeguchi-k852a@mlit.go.jp
- Mr. BABA Hitoshi
 - E-mail: baba-h2h7@mlit.go.jp
- Mr. MIYAZAKI Ayumu
 - E-mail: miyazaki-a2ry@mlit.go.jp
- Tel: +81 3-5253-8319, Fax: +81 3-5253-1561

Thank you for your attention.

